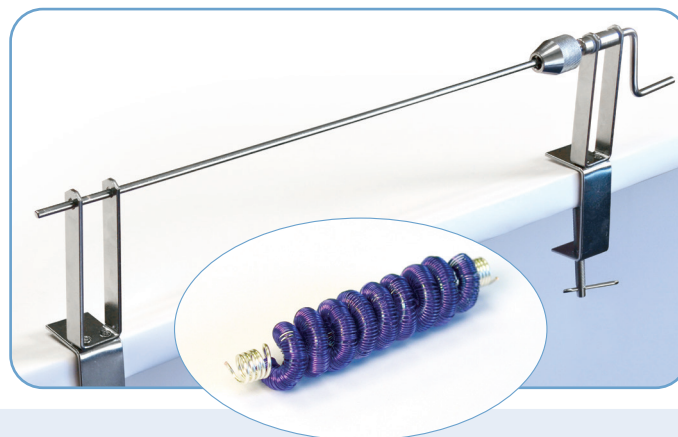




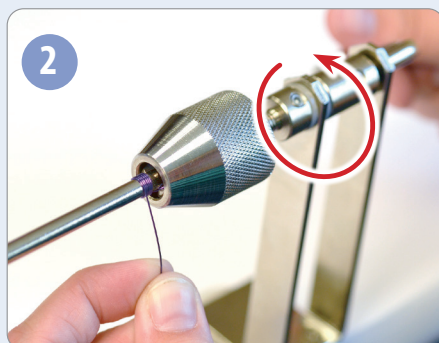
# PROFESSIONAL DELUXE COILING GIZMO



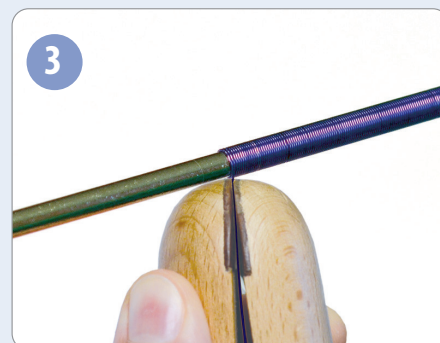
## PROFESSIONAL DELUXE COILING GIZMO



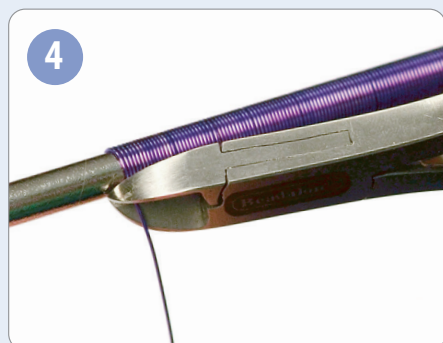
Insert Wire.



Turn Crank.



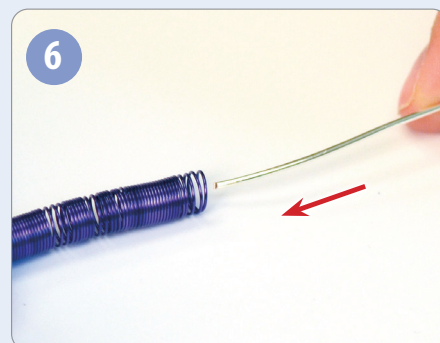
Hold the wire with your fingers or a Ring/Wire Clamp.



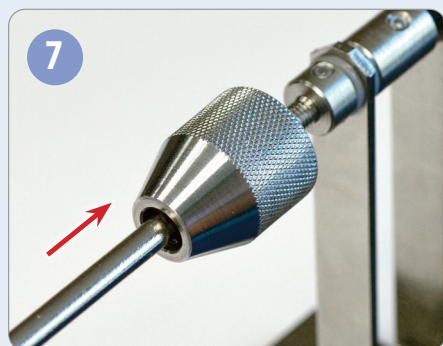
Coil to desired length. Trim wire.



Remove Coil from Rod. Flush-cut the inside of the coil.



Insert another wire into the coil. Don't cut the wire until you have completed your second coiling to ensure you have enough wire.



Use a different diameter rod for this step.



Turn Crank.



Start and finish the bead with a few extra coils.