

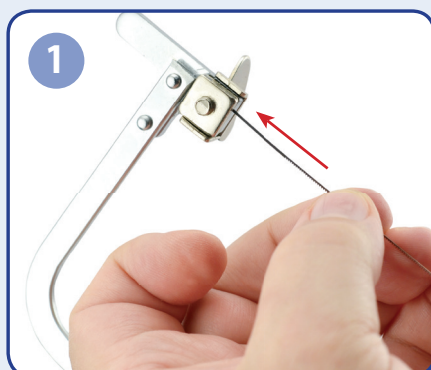


Artistic Wire®

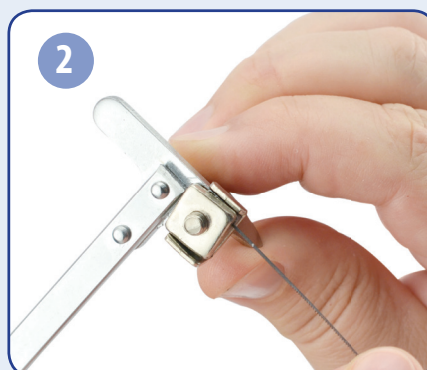
Saw Blade with 36 Blades



SAW BLADE WITH 36 BLADES INSTRUCTIONS



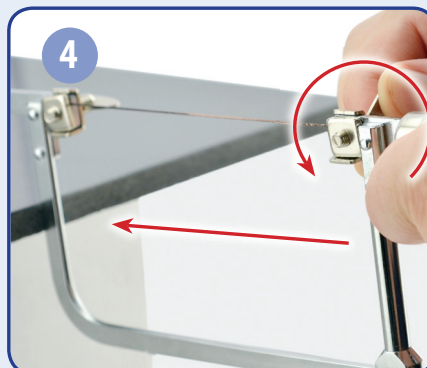
Loosen the wing nuts on the saw and insert the blade with the teeth pointing out and down.



Slip one end of the blade into the fixture and tighten the wing nut.



Adjust the saw arm to fit the blade, then carefully position the other end of the blade into the saw frame fixture.



Apply pressure from the end of the saw so that the blade is guided into the other fixture. Tighten the wing nut.