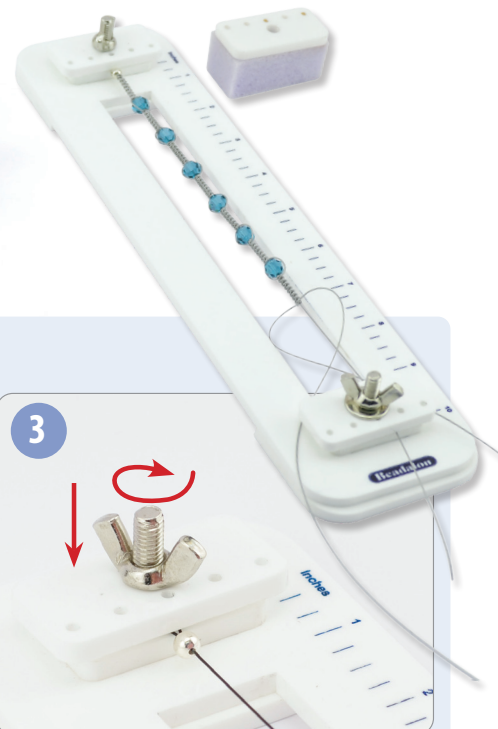
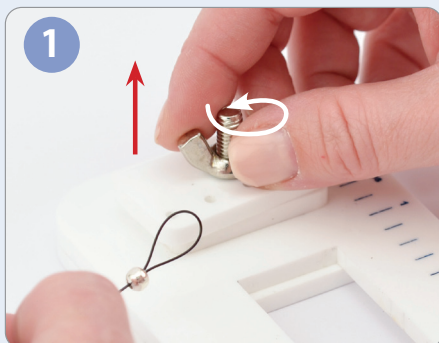


Beadalon®

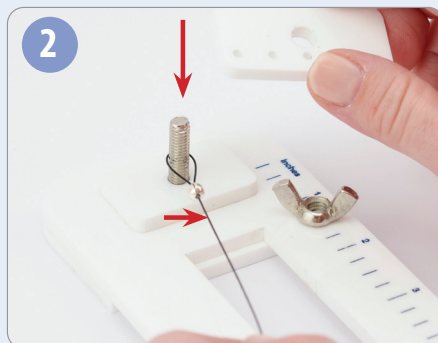
TYING STATION



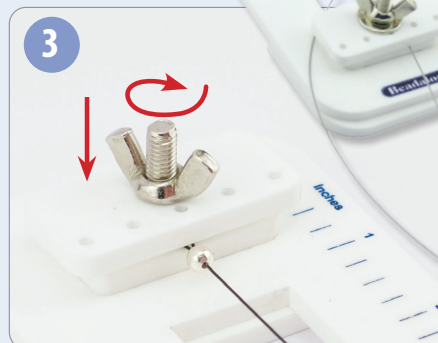
TYING STATION INSTRUCTIONS



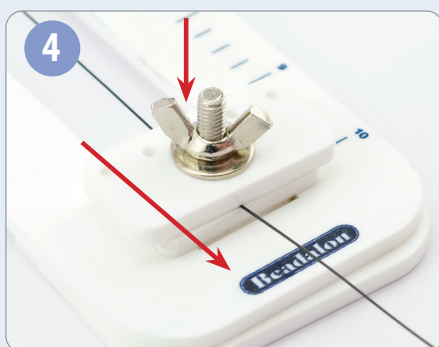
1 Unscrew the wing nut at the upper part of the Tying Station. Make a loop with your cord and tie or crimp it.



2 Remove the plate and place the looped cord around the post. Replace the plate.



3 Tighten the wing nut.



4 Loosen wing nut at the base of the Tying Station. Slide cord between acrylic plates. Tighten as needed to keep cord secure.



5 Enjoy the convenience of having both hands available to design intricate jewelry, such as Shamballa Style and Wrap Bracelets.



6 Tip: If your design is longer than the Tying Station, simply remove the upper plate and add the foam pad. Pull your design through and gently tighten the wing nut to continue working on your jewelry piece.



• Holds your design in place for two handed tying and bead work

• Extend your design using the foam pad plate included

• Ruler guide for sizing your design and for laying out patterns